

## Injury attendances to Fairfield General Hospital Emergency Department

### October 2011 to September 2012

This report summarises recorded injury attendances to Fairfield General Emergency Department (ED) between October 2011 and September 2012.

Between October 2011 and September 2012 there were 23,965 injury attendances to Fairfield General Hospital ED. Males accounted for just over half (53%) of all attendances. The month with the highest injury attendances was March (n=2,278) with September (n=1,819) having the lowest (**Figure 1**). Seven in ten (70%) of injury attendances were recorded as other injury. Of the specified injury groups, falls (15%) accounted for the highest proportion followed by road traffic collisions (RTCs) (5%) and assault (5%) (**Table 1**).

For all injury attendances, the highest proportions were for persons aged 5 to 19 (24%) and 20 to 34 years (23%) (**Figure 2**). Over half (54%) of fall attendees were aged 65 or over. Two-fifths (41%) of RTC attendees and over a third (34%) of deliberate self-harm (DSH) attendees were aged 20 to 34 years (**Figure 3**).

**Table 2** shows the location of the incident of injury attendances. Over two-fifths (43%) of injuries occurred in the home. Almost one in six (16%) of injuries occurred in a public place with smaller proportions occurring at work (6%) or at an educational establishment (5%). Half (51%) of assaults occurred in a public place. Almost three

quarters (74%) of DSH injuries occurred at home. Almost six in ten (57%) falls occurred in the home.

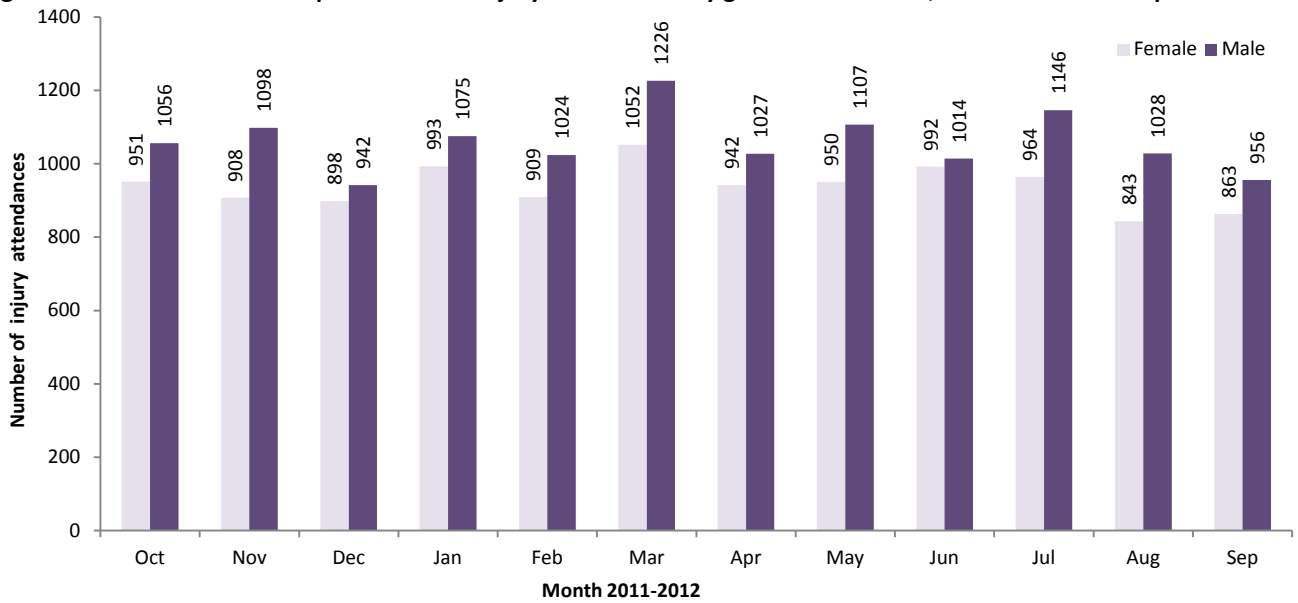
**Table 3** shows the ethnicity of attendees to Fairfield General Hospital ED. Almost nine in ten (86%) were white and 6% were Pakistani.

The disposal of a patient can give an indication of the severity of the injuries sustained. Most (62%) attendees were discharged, three in ten (30%) had a referral/follow-up and 8% were admitted (**Table 4**). Almost three-quarters (74%) of RTC attendees were discharged. Almost a quarter (22%) of fall attendees were admitted and over two-fifths (45%) of burns and scalds attendees had a referral/follow-up (**Table 5**).

**Table 6** shows the arrival methods of injury attendances at Fairfield General Hospital ED. Almost seven in ten (69%) arrived by private transport whilst 17% arrived by ambulance.

**Table 7** shows assault attendances to Fairfield General ED. Over seven in ten (71%) assault attendees were male and over half (51%) were aged 20 to 34 years. Almost four in ten (38%) of assault attendances arrived at the ED by ambulance.

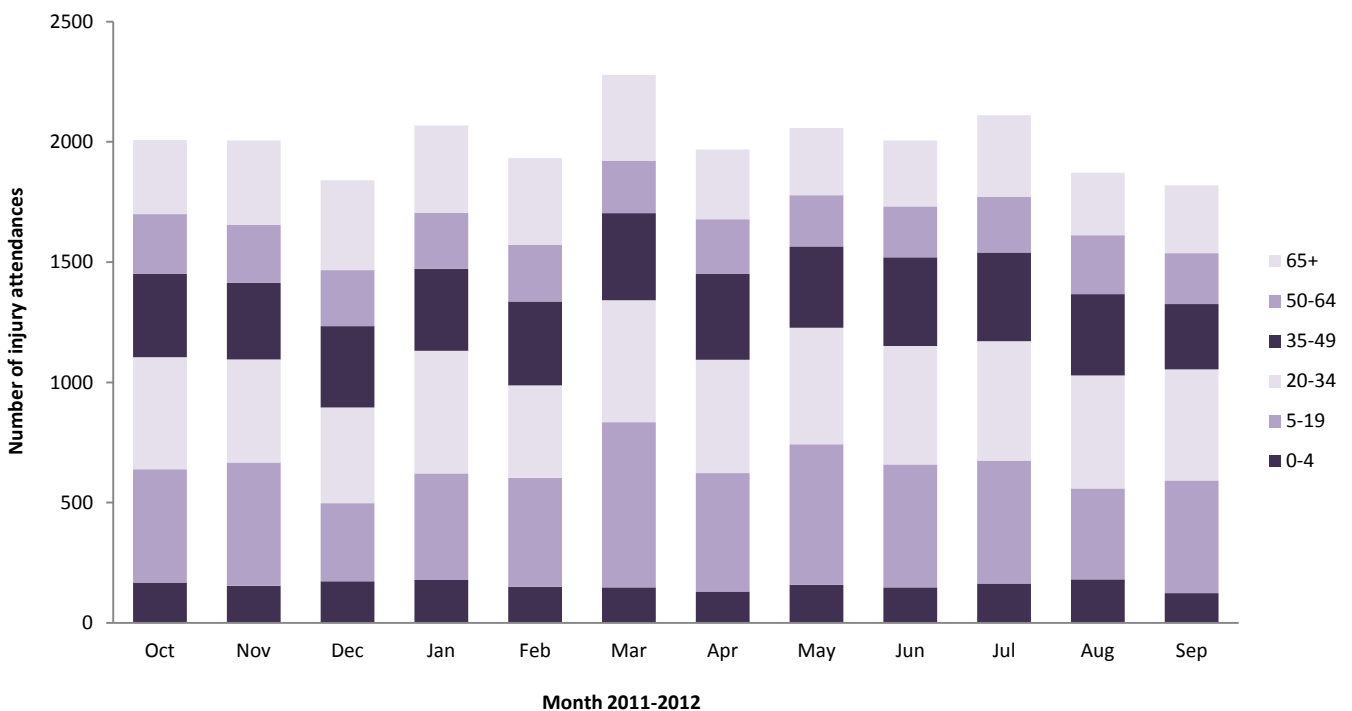
**Figure 1: Fairfield General Hospital ED: Total injury attendances by gender and month, October 2011 to September 2012**



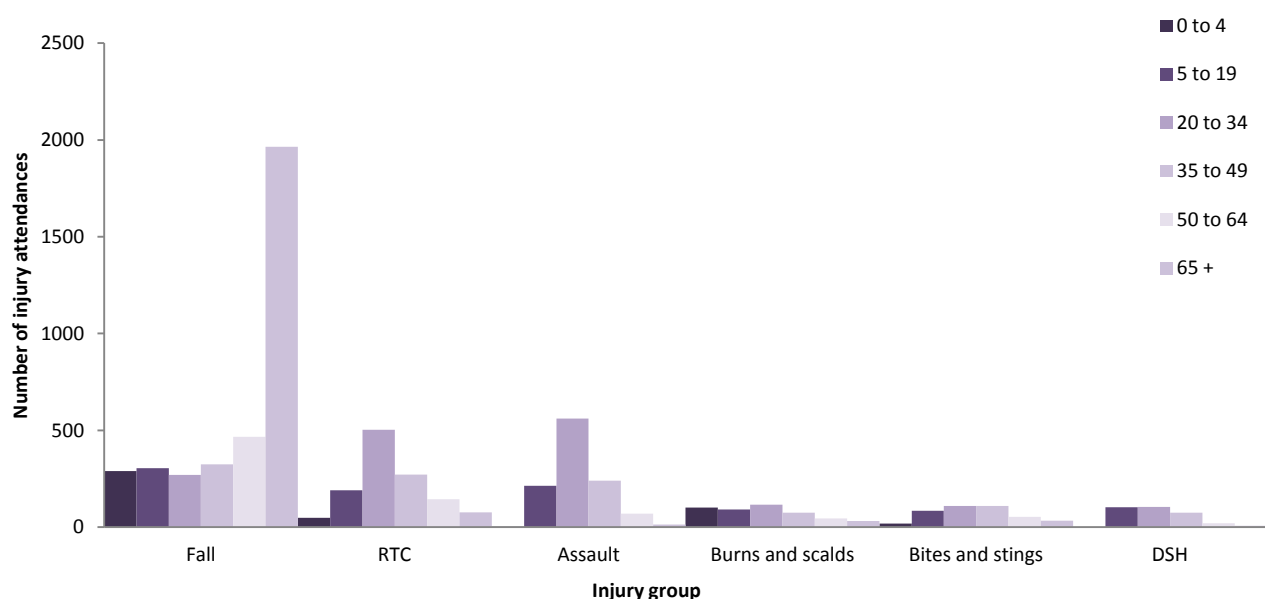
**Table 1: Fairfield General Hospital ED: Total injury attendances by injury group and month, October 2011 to September 2012**

Injury group	Oct	Nov	Dec	Jan	Feb	Mar	Apr	May	Jun	Jul	Aug	Sep	Total	%
Other injury	1359	1371	1094	1340	1285	1696	1473	1495	1491	1568	1321	1342	16835	70
Fall	344	311	406	380	360	282	253	273	260	280	230	241	3620	15
RTC	94	123	136	154	106	99	70	83	99	63	106	101	1234	5
Assault	106	117	113	105	90	115	82	88	52	83	84	65	1100	5
Burns and scalds	26	40	37	34	38	37	35	53	36	47	47	29	459	2
Bites and stings	35	10	24	27	23	33	35	44	48	54	58	18	409	2
DSH	43	34	30	28	31	16	21	21	20	16	25	23	308	1
<b>Total</b>	<b>2007</b>	<b>2006</b>	<b>1840</b>	<b>2068</b>	<b>1933</b>	<b>2278</b>	<b>1969</b>	<b>2057</b>	<b>2006</b>	<b>2111</b>	<b>1871</b>	<b>1819</b>	<b>23965</b>	<b>100</b>

**Figure 2: Fairfield General Hospital ED: Total injury attendances by age group and month, October 2011 to September 2012**



**Figure 3: Fairfield General Hospital ED: Total injury attendances by age group and injury group, October 2011 to September 2012 (excluding other injury)**



**Table 2: Fairfield General Hospital ED: Total injury attendances by location of incident and injury group, October 2011 to September 2012<sup>1,2</sup>**

Incident location	Assault		Bites and stings		Burns and scalds		DSH		Fall		Other injury		RTC		Total	
	n	%	n	%	n	%	n	%	n	%	n	%	n	%	n	%
Home	234	21	165	40	247	54	227	74	2061	57	7292	43	15	1	10241	43
Other	195	18	65	16	59	13	50	16	358	10	3548	21	1192	97	5467	23
Public place	566	51	86	21	<20	4	24	8	725	20	2314	14	<15	1	3746	16
Not recorded	16	1	58	14	90	20	6	2	329	9	1444	9	7	1	1950	8
Work	69	6	<35	8	43	9	***	0	77	2	1222	7	<7	0	1451	6
Educational establishment	20	2	***	0	***	0	***	0	70	2	1015	6	***	0	1110	5
<b>Total</b>	<b>1100</b>	<b>100</b>	<b>409</b>	<b>100</b>	<b>459</b>	<b>100</b>	<b>308</b>	<b>100</b>	<b>3620</b>	<b>100</b>	<b>16835</b>	<b>100</b>	<b>1234</b>	<b>100</b>	<b>23965</b>	<b>100</b>

**Table 3: Fairfield General Hospital ED: Total injury attendances by ethnicity and month, October 2011 to September 2012<sup>3</sup>**

Ethnicity	Oct	Nov	Dec	Jan	Feb	Mar	Apr	May	Jun	Jul	Aug	Sep	Total	%
White	1732	1746	1606	1752	1644	1981	1712	1750	1680	1819	1619	1604	20645	86
Pakistani	115	105	100	121	133	103	115	130	137	133	104	95	1391	6
Not known	75	76	53	82	67	95	51	69	87	44	70	51	820	3
Any other ethnic group	40	43	33	36	40	30	31	36	37	47	34	37	444	2
Any other Asian background	7	17	14	25	14	27	18	25	18	26	13	12	216	1
Black	18	12	21	18	13	12	13	19	11	7	5	4	153	1
Mixed	17	***	7	24	<7	12	15	16	20	19	15	9	163	1
Bangladeshi	***	***	***	6	<7	11	<7	***	<6	7	***	5	58	0
Indian	***	***	***	***	9	***	7	7	8	<7	***	***	52	0
Chinese	***	***	***	***	***	***	***	***	***	***	6	***	23	0
<b>Total</b>	<b>2007</b>	<b>2006</b>	<b>1840</b>	<b>2068</b>	<b>1933</b>	<b>2278</b>	<b>1969</b>	<b>2057</b>	<b>2006</b>	<b>2111</b>	<b>1871</b>	<b>1819</b>	<b>23965</b>	<b>100</b>

**Table 4: Fairfield General Hospital ED: Total injury attendances by method of disposal and month, October 2011 to September 2012**

Disposal	Oct	Nov	Dec	Jan	Feb	Mar	Apr	May	Jun	Jul	Aug	Sep	Total	%
Discharged	1371	1225	1162	1263	1111	1333	1195	1411	1272	1216	1173	1098	14830	62
Referral/follow-up	438	564	441	598	598	777	652	507	609	754	553	611	7102	30
Admitted	176	192	202	190	203	152	113	122	117	122	118	104	1811	8
Other	22	25	35	17	21	16	9	17	8	19	27	6	222	1
<b>Total</b>	<b>2007</b>	<b>2006</b>	<b>1840</b>	<b>2068</b>	<b>1933</b>	<b>2278</b>	<b>1969</b>	<b>2057</b>	<b>2006</b>	<b>2111</b>	<b>1871</b>	<b>1819</b>	<b>23965</b>	<b>100</b>

<sup>1</sup> Please note that all numbers less than five have been suppressed (\*\*\*) in line with patient confidentiality and if there is only one number less than five in a category then two numbers will be suppressed at the next level.

<sup>2</sup> Percentages may not add up to a hundred due to rounding.

<sup>3</sup> White = Irish, British, other white background; Mixed = white and black, white and Asian, mixed other; Other = any other ethnic group, any other Asian background; Black = African, Caribbean, other black.

**Table 5: Fairfield General Hospital ED: Total injury attendances by method of disposal and injury group, October 2011 to September 2012**

Disposal	Assault		Bites and stings		Burns and scalds		DSH		Fall		Other injury		RTC		Total	
	n	%	n	%	n	%	n	%	n	%	n	%	n	%	n	%
Discharged	658	60	264	1	221	48	143	46	1916	53	10710	64	918	74	14830	62
Referral/follow-up	277	25	135	0	208	45	53	17	853	24	5309	32	267	22	7102	30
Admitted	90	8	<10	0	<20	4	79	26	810	22	773	5	33	3	1811	8
Other	75	7	***	0	<12	2	33	11	41	1	43	0	16	1	222	1
<b>Total</b>	<b>1100</b>	<b>100</b>	<b>409</b>	<b>100</b>	<b>459</b>	<b>100</b>	<b>308</b>	<b>100</b>	<b>3620</b>	<b>100</b>	<b>16835</b>	<b>100</b>	<b>1234</b>	<b>100</b>	<b>23965</b>	<b>100</b>

**Table 6: Fairfield General Hospital ED: Total injury attendances by mode of arrival and month, October 2011 to September 2012**

Arrival mode	Oct	Nov	Dec	Jan	Feb	Mar	Apr	May	Jun	Jul	Aug	Sep	Total	%
Private transport	1297	1304	1130	1305	1197	1616	1439	1515	1475	1525	1356	1313	16472	69
Ambulance	463	461	497	491	475	335	232	241	228	253	229	220	4125	17
Not recorded	99	86	85	108	101	133	132	105	120	150	123	122	1364	6
Taxi	61	55	55	79	57	79	59	92	81	71	62	78	829	3
Public transport	32	45	19	29	36	48	42	25	41	45	30	23	415	2
Foot	27	25	18	26	19	33	33	40	26	29	34	34	344	1
Police	14	13	18	18	26	17	17	25	12	19	25	15	219	1
Work transport	9	7	10	***	<6	6	11	6	16	10	8	9	100	0
Other	<6	<9	<6	<8	12	***	***	***	***	<7	***	***	61	0
Unknown	***	***	***	***	<6	<8	***	***	<6	***	***	***	36	0
<b>Total</b>	<b>2007</b>	<b>2006</b>	<b>1840</b>	<b>2068</b>	<b>1933</b>	<b>2278</b>	<b>1969</b>	<b>2057</b>	<b>2006</b>	<b>2111</b>	<b>1871</b>	<b>1819</b>	<b>23965</b>	<b>100</b>

**Table 7: Fairfield General Hospital ED: Total injury attendances by mode of arrival, gender and age group, October 2011 to September 2012**

Injury type	Assault attendees		All injuries % (n=23,965)
	n	%	%
<b>Gender</b>			
Female	321	29	47
Male	779	71	53
<b>Mode of arrival</b>			
Ambulance	418	38	17
Other	682	62	83
<b>Age group</b>			
0 - 4	***	0	8
5 - 19	214	19	24
20 - 34	561	51	23
35 - 49	240	22	17
50 - 64	69	6	11
65 plus	<15	1	16

Author: Jennifer Brizell, Published: January 2013

For further information contact: Val Upton, Centre for Public Health, Research Directorate, Liverpool John Moores University, 2nd Floor, Henry Cotton Building, 15-21 Webster Street, Liverpool, L3 2ET

Tel: 0151 231 4500 or Email: [j.s.brizell@ljmu.ac.uk](mailto:j.s.brizell@ljmu.ac.uk) Website: [www.tiig.info](http://www.tiig.info) (data requests should be made through the website)